


AUBERGE
Discovery Bay Hong Kong
香港愉景灣酒店



Explore
HONG KONG'S OASIS

Explore another side to Asia's most dynamic city at Auberge Discovery Bay Hong Kong.

Located on Lantau Island, Discovery Bay is a scenic seaside destination 25 minutes away from Central, Hong Kong.

Ideally positioned on the waterfront and surrounded by greenery, Auberge Discovery Bay Hong Kong offers visitors the best of both worlds. Guests can experience the vibrant pace of a cosmopolitan city, then retreat to the natural beauty of a seaside resort.

Explore Auberge Discovery Bay Hong Kong – part of Hong Kong, yet worlds apart.



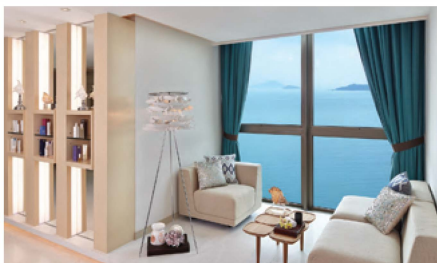
From an urban jungle to an oasis in 25 minutes

- Regular hotel shuttles or public buses commute between Discovery Bay Pier, Sunny Bay and Tung Chung MTR Station
- Cruise to Discovery Bay from Central in 25 minutes via a high-speed ferry
- Travel from Hong Kong International Airport by public buses in 25 minutes
- Point to point hotel pick-up service is available upon request
- Urban taxi (red) or Lantau taxi (blue) can access hotel directly



Food for thought

- Stir your senses at Café bord de Mer & Lounge. Choose from the sumptuous buffet or à la carte menu and enjoy the panoramic view of the South China Sea. Caters for 160 guests
- Step out to Café bord de Mer Terrace to enjoy sea breeze, fresh cocktails and light refreshments. Enticing and spacious, the terrace can accommodate up to 230 guests
- The Bounty Entertainment & Sports Bar entices with its relaxing vibe and inventive drinks menu. Featuring large LCD screens & TVs for live sports, billard and a VIP room, it is perfect for match nights, friends' gatherings and private functions



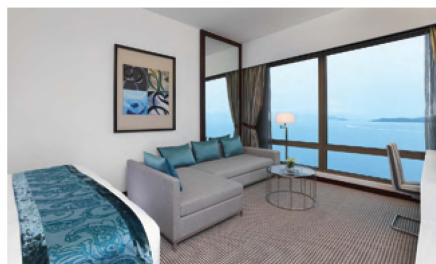
Spa Botanica

- Get pampered in one of Spa Botanica's 10 private spa rooms with unrivalled sea views

Room at the top

Auberge Discovery Bay Hong Kong's superb rooms and suites convey a warm welcome and cool sophistication. Across-the-board amenities include:

- Signature ultra-comfortable beds
- Contemporary design in cool blues and modern furnishings
- 40" flat panel TV
- Complimentary broadband Internet / Wi-Fi access
- Deluxe bathrooms featuring hairdryer, plush towels and signature amenities
- Coffee and tea-making facilities
- In-room safe
- Iron and ironing board
- Mini fridge



Suites to suit

322 elegant rooms or exclusive suites to choose from, including:

- 144 Mountain View Rooms (30 sqm)
- 99 Ocean Front Rooms (33 sqm)
- 9 Ocean Front Deluxe Rooms
- 9 Panoramic View Rooms
- 64 suites (including 40 with sea views), ranging from one to three-bedroom suites



Turning events into memorable occasions

- With over 3,000 sqm of event space, Auberge Discovery Bay Hong Kong can cater for every occasion, from grand-scale functions to intimate gatherings. For larger events, the 702 sqm pillar-free Grand Azure proves an ideal venue. The space can welcome 576 guests for a sit-down banquet or 700 guests in a cocktail party setting
- 10 additional function rooms on the first floor range from 28 sqm to 349 sqm and can host events of any size, from boardroom meetings to cocktail parties or family celebrations

- Outdoor venues such as Grand Azure Terrace, Marine Terrace and Café bord de Mer Terrace allow guests to take advantage of the sensational surrounding scenery



Say "I do" by the seaside

- Auberge Discovery Bay Hong Kong is also home to Hong Kong's only seaside White Chapel. Offering a picture-perfect setting, the White Chapel captivates all with its romantic charm, elegant design and idyllic waterfront setting. Stylish and sophisticated, the venue can accommodate 120 guests

Escape mundanity at Auberge Discovery Bay Hong Kong

- Reconnect with nature on one of the many hiking trails
- Lap it up at the outdoor swimming pool
- Discover nearby tourist attractions, including EpicLand, Hong Kong Disneyland, Ngong Ping 360 Cable Car, The Big Buddha, Tai O Fishing Village, Peng Chau and Citygate Outlets Mall
- Indulge in international cuisines at Discovery Bay alfresco dining hub D'Deck's one of many restaurants while enjoying 180-degree sea view

